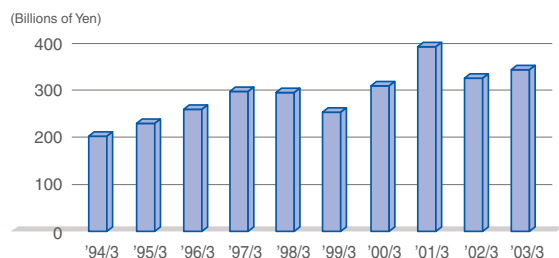


Non-Consolidated Financial Results

Sales

Net Sales



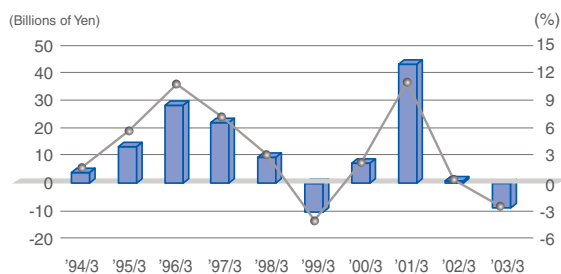
(Millions of Yen)

Fiscal Year-End	1994/3	1995/3	1996/3	1997/3	1998/3	1999/3	2000/3	2001/3	2002/3	2003/3
Net Sales	201,049	229,190	259,557	295,820	293,932	252,495	308,604	391,320	325,222	342,626

* From fiscal 2002, income from repairs is included in net sales as after sales service revenue.

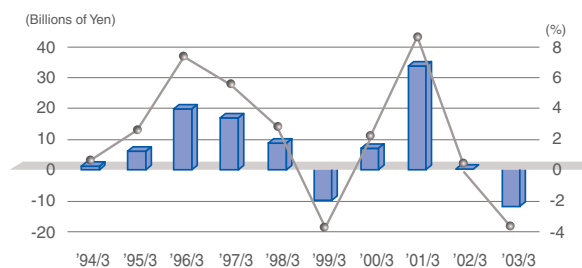
Income

Operating Income, Operating Income to Net Sales



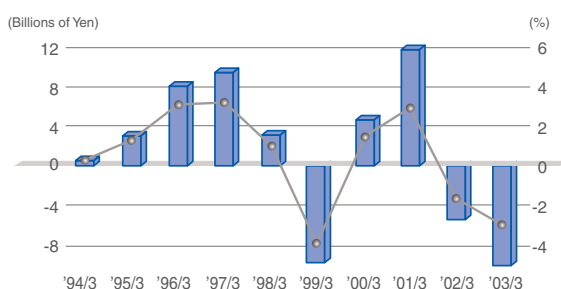
■ Operating Income ● Operating Income to Net Sales

Ordinary Income, Ordinary Income to Net Sales



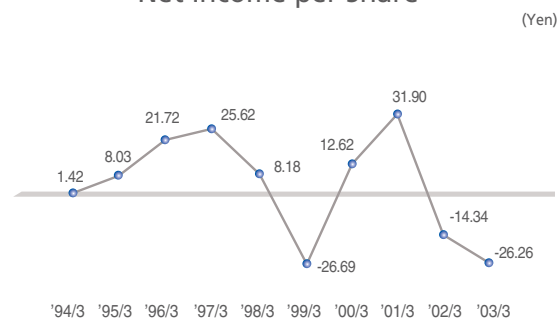
■ Ordinary Income ● Ordinary Income to Net Sales

Net Income, Net Income to Net Sales



■ Net Income ● Net Income to Net Sales

Net Income per Share

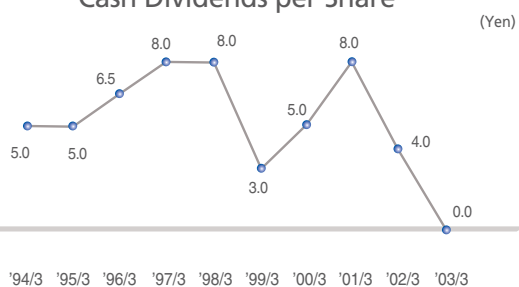


(Millions of Yen Unless Indicated)

Fiscal Year-End	1994/3	1995/3	1996/3	1997/3	1998/3	1999/3	2000/3	2001/3	2002/3	2003/3
Operating Income	3,463	13,066	28,138	21,541	8,975	-10,404	7,021	43,021	891	-9,826
Operating Income to Net Sales (%)	1.7	5.7	10.8	7.3	3.1	-4.1	2.3	11.0	0.3	-2.9
Ordinary Income	1,085	5,878	18,845	16,477	8,362	-9,622	6,541	32,886	390	-12,564
Ordinary Income to Net Sales (%)	0.5	2.6	7.3	5.6	2.8	-3.8	2.1	8.4	0.1	-3.7
Net Income	526	2,971	8,038	9,477	3,029	-9,873	4,671	11,804	-5,302	-9,706
Net Income to Net Sales (%)	0.3	1.3	3.1	3.2	1.0	-3.9	1.5	3.0	-1.6	-2.8
Net Income per Share (Yen)	1.42	8.03	21.72	25.62	8.18	-26.69	12.62	31.90	-14.34	-26.26

Cash Dividends per Share

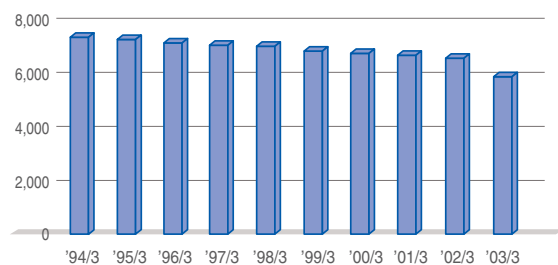
Cash Dividends per Share



Fiscal Year-End	1994/3	1995/3	1996/3	1997/3	1998/3	1999/3	2000/3	2001/3	2002/3	2003/3
Cash Dividends per Share (Yen)	5.0	5.0	6.5	8.0	8.0	3.0	5.0	8.0	4.0	0.0

Number of Employees

Number of Employees



Fiscal Year-End	1994/3	1995/3	1996/3	1997/3	1998/3	1999/3	2000/3	2001/3	2002/3	2003/3
Number of Employees*	7,264	7,164	7,034	6,955	6,907	6,739	6,675	6,582	6,486	5,986

* The figures include personnel dispatched to subsidiaries and associated companies.